

Interior Design Portfolio



Tracey Davis Marshall, NCIDQ

About Me



I have a passion for creating spaces with flair inside a **prescribed budget**. Balancing value engineering and aesthetics.

I emphasize **operationally functional** design, materials, and space planning.

I hold a degree in interior design, have over **20 years** of experience, and am **NCIDQ certified**..



Roz Mongin · 1st

Project Manager

July 5, 2025, Tracey was senior to Roz but didn't manage Roz directly

Tracey was excellent with all of the field's design questions. She is detail focused, responsive and knowledgeable! I highly valued Tracey's leadership, direction and work ethic.



Dean deTonnancourt · 1st

Broker/Owner/CEO at HomeSmart Professionals Real Estate

July 2, 2025, Dean was Tracey's client

All LinkedIn members

On

Starting fresh with a new brand can be both exciting and overwhelming—but having Tracey in my corner made all the difference. From day one, Tracey provided unwavering support during my transition as a new HomeSmart franchisee. Her incredible attention to detail, upbeat attitude, and deep understanding of the brand's systems and culture created a strong foundation for our success.

Tracey went above and beyond to ensure we felt not only prepared but genuinely welcomed into the HomeSmart community. Her commitment to our growth was evident in every interaction—always striking the perfect balance of professionalism and personal connection. Her guidance helped us align quickly with the company's values, tools, and vision for the future.

Thank you, Tracey, for your dedication, encouragement, and exceptional leadership. Your support truly set us up for success!



Brendan McBratney · 1st

Investor | Entrepreneur | Multi-Unit Franchisee

October 24, 2023, Brendan was Tracey's client

All LinkedIn members

On

Tracey was highly responsive, easy & fun to work with. She was able to balance the regulations & project requirements with the needs of the time at the moment in which we were collaborating, keeping all parties interested involved, engaged & navigating to a complete project goal. The nuance of that type of leadership cannot be understated. We loved working with Tracey!

Design Accumen



Corporate Interiors
Functional spaces

Retail Spaces
Innovative designs



Project Management
Transforming spaces

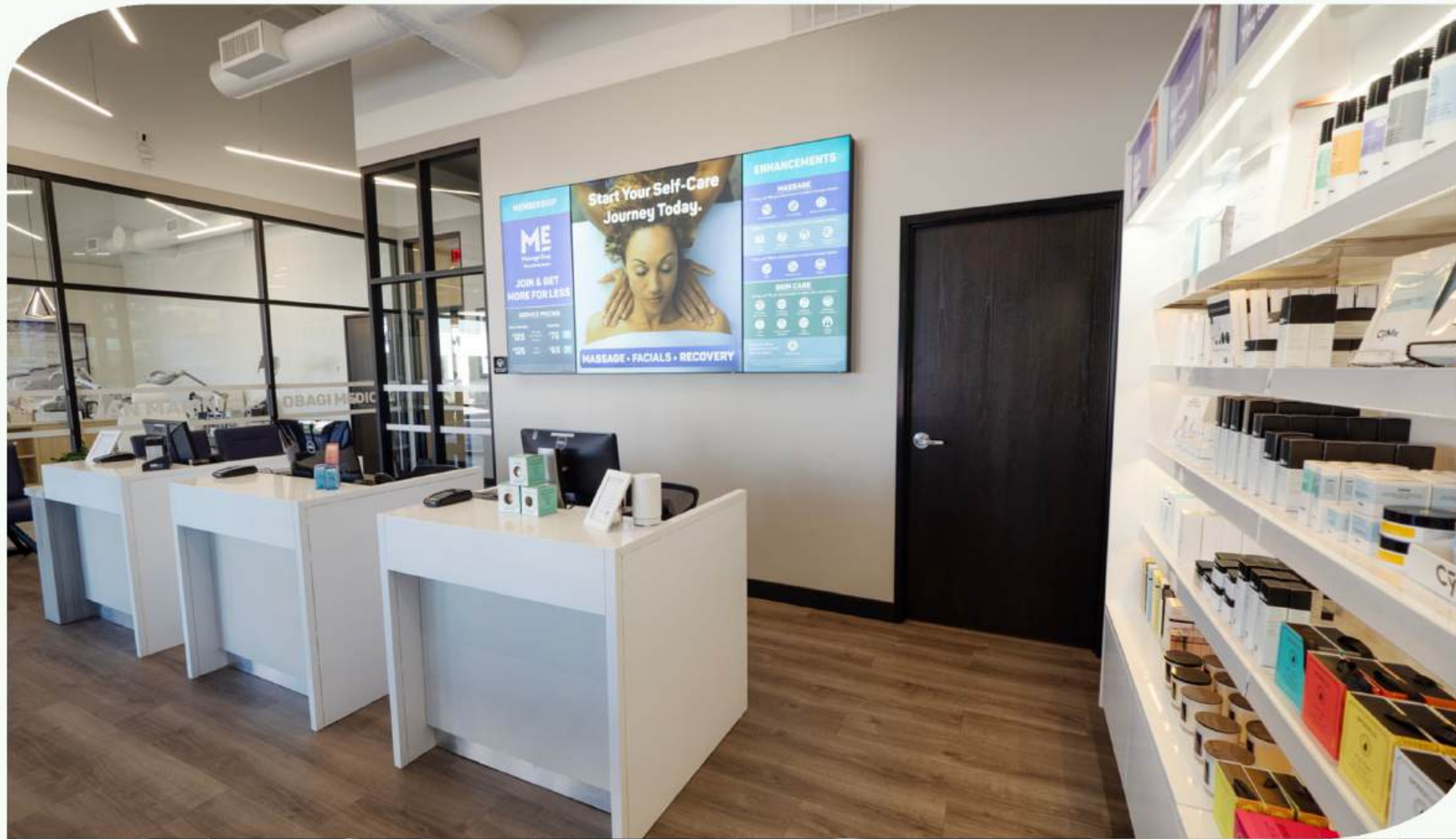


Corporate Offices

I transformed a 1700sf dungeionesque office space packed with high cubicles and dim lighting into a light-filled open-office concept, emphasizing communal and flexible work space options.



- Removed perimeter offices that blocked windows
- Removed unused board rooms to create a work/lunch lounge
- Reduced the height of all cubicles for better sightlines and employee interaction
- Incorporated company logo colors and key concepts into design



Retail / Wellness

I overhauled the design concept for outdated locations, creating a clean, modern aesthetic for post-Covid health concerns.

- Removed grid & tile ceilings in the lobby and communal care areas to enlarge claustrophobic spaces
- Muted the color scheme without being antiseptic
- Incorporated seating that was specifically engineered for clients with mobility issues
- Incorporated oversized soft signage for both visibility and sound mitigation



Residential Luxury

This new build home in Troon had a “modern Santa Barbara” tone: rich colors, luxury fabrics, and a lot of detailing.

- Custom distressed leather sofa – 7'x11' with 42" back to act as a room divider
- One-of-a-kind furniture pieces sourced both from throughout the Valley and internationally
- Custom drapery and wrought iron fittings throughout the home
- Silk & wool rugs
- Custom stonework on fireplaces, door surrounds, and entry hall
- Turn-key project included all bedding, art, and accessories



Yacht Living

Yachts require specialized cabinetry and furniture to fit close quarters while delivering luxury accommodations.

- Upholstered furniture pieces designed to fit the size of the “living room”
- Every square inch utilized for storage with custom millwork; shallow depths; hidden storage; adjusted heights for low ceilings
- High-end appliances
- Granite counters and stone backsplashes



Millwork Design

I reengineered millwork to suit new usage requirements. Functionality in small spaces was key to the design.

- Increased the footprint of existing designs, changed shapes, moved locations, and added shelving to increase usable space
- Updated finishes to match new color scheme
- Designed a free-standing, double-sided island to facilitate four technicians to work at once.
- Tested out materials that would not be affected by steam-producing equipment



Product Design

I worked with a vendor to design and produce faux wall tiles. These proprietary tiles are made of rigid foam core with a decorative wood-grain face and recessed black seams. Even standing within a couple of feet from the wall, you cannot tell that they are not porcelain tiles. The tiles come in 2'x2' sections that can be customized for any size wall. They are easily cut with a utility knife, however can withstand being banged into or even walked on. Lightweight for shipping and easy adhesive application saved hundreds in the design implementation. Large impact with low material, shipping, and labor costs.

Design Presentations



Color Schemes

Materials



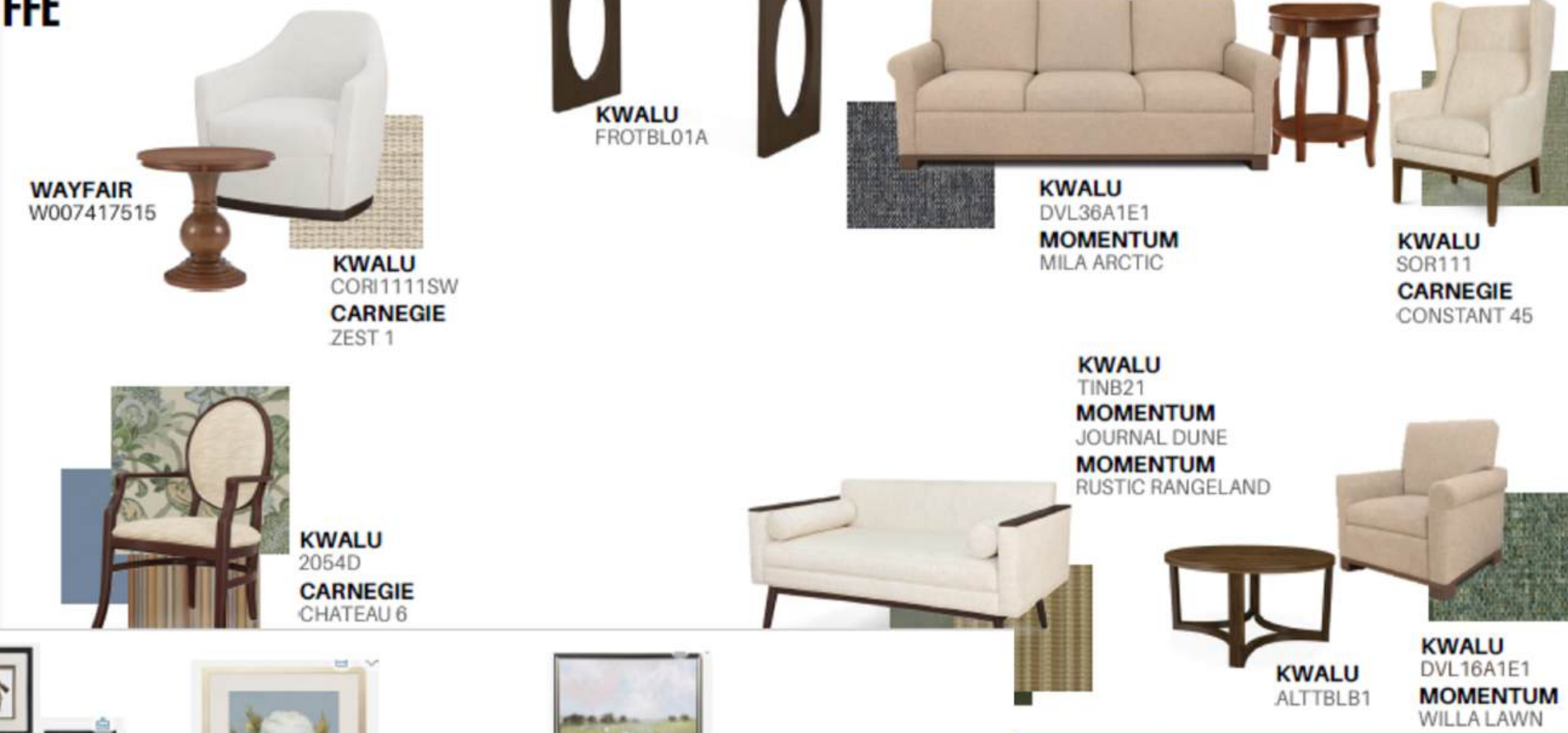
FFE

MOOD BOARD - FITNESS AREA



GREAT ROOM

FFE



welltower

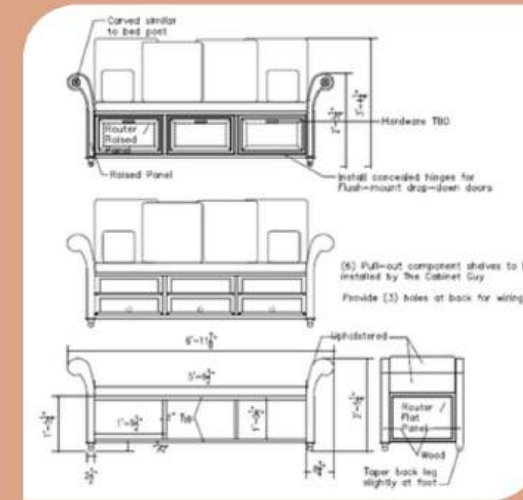
IND ART

CORRIDORS



Well

Illustrations & Elevations



Custom Pieces

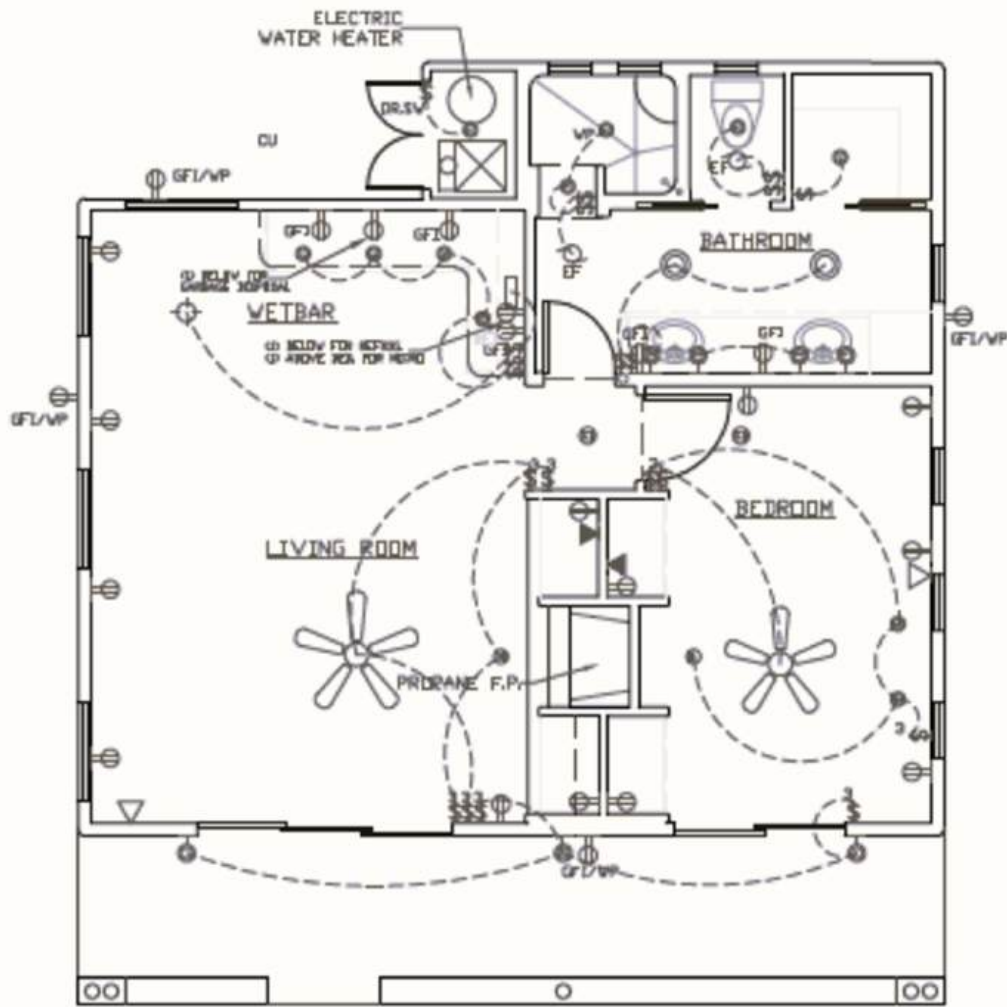
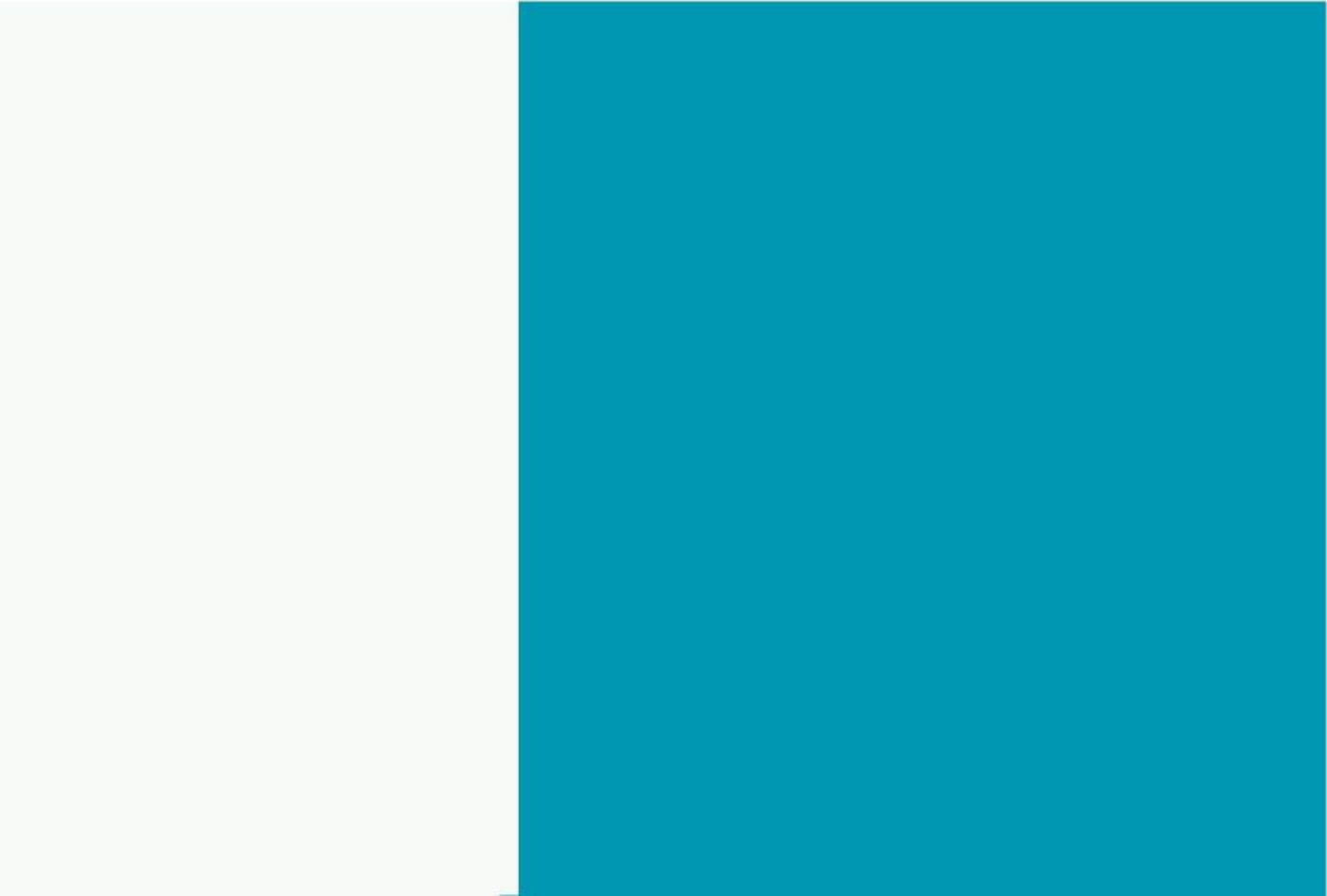
Materials



Construction Plans



SCALE: NTS
REVISED: 10/11/05



ELECTRICAL PLAN

Get in Touch

Tracey Davis Marshall
602.738.0017
TraceysEmail215@gmail.com

